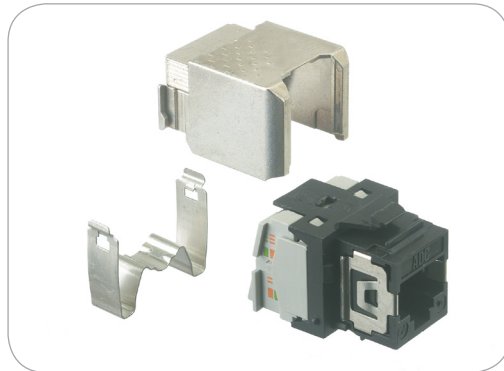


# TrueNet®

## Category 6<sub>A</sub> KM8 Shielded Jack



The TrueNet® Category 6<sub>A</sub> solution supports 10 Gigabit Ethernet over copper to a full 100 metres up to 500 MHz.

The Category 6<sub>A</sub> Shielded Jack is a core component of the solution and can be used in a range of accessories from floor boxes to patch panels and outlets offering complete flexibility depending upon the installation requirements.

All Category 6<sub>A</sub> components including the KM8 Jack are fully interoperable and backwards compatible with existing Category 5e and Category 6 based cabling, components and systems.

As with all TrueNet® jacks, the Category 6<sub>A</sub> Jack uses the LSA-PLUS® Quick Connection technique, a highly reliable gas tight wire termination method.

### Features

- Supports 10 Gigabit Ethernet over shielded copper to a full 100m up to 500MHz
- Exceeds requirements of ISO/IEC 11801:2002 amendment 2, TIA-568-C.2 EN 50173-1:2007
- Fully interoperable and backwards compatible with component compliant Category 5e / Class D and Category 6 / Class E systems
- Compatible with a comprehensive range of accessories

### Benefits

- A lower cost route to achieve 10 Gigabit performance in the Enterprise Network
- Maximises productivity levels with 10 times the data throughput
- Minimum network latency
- True future proofing for tomorrow's network applications
- Reliable installation due to innovative design
- Covered by the TrueNet® System Warranty\*

## Ordering Information

Description	Catalogue number
Category 6 <sub>A</sub> Shielded KM8 Jack, Single Bag, Black	6830 1 811-04
Category 6 <sub>A</sub> Shielded KM8 Jack, Single Bag, White	6830 1 811-01

### Technical Specifications

#### Electrical Data

Insulation Resistance at +60°C and 93% RH	≥ 1GΩ
Dielectric Strength	Contact / contact ≥ 1.0kV DC Contact / shield ≥ 1.0kV DC
Current Carrying Capacity	≥ 1A
Typical Plug / Jack Contact Resistance	≤ 20mΩ
Typical IDC Contact Resistance	≤ 5mΩ
Conductor Terminations of LSA-PLUS® Contacts	≥ 200
Conductor Diameter	0.5-0.65mm (AWG 24-22)
Insulation Diameter	0.7-1.6mm

#### Mechanical Data

Plug / Jack Mating Cycles	≥ 750 (IEC/EN 60603-7)
Plug / Jack Insertion / Withdrawl Force	≤ 20N (IEC/EN 60603-7)
Operating Temperature Range	-10°C to +60°C
Operating Humidity Range	≤ 95% R.H. Non Condensing

Category 6 <sub>A</sub>	ISO/IEC 11801:2002 Amendment 1 (channel) ISO/IEC 11801:2002 Amendment 2 (permanent link & components) TIA-568-C.2 (channel, permanent link & components) EN 50173-1:2007
-------------------------	--

\*Terms & conditions apply

## DATA SHEET



#### Contact us:

TE Connectivity Ltd.  
Diestse Steenweg 692  
3010 Kessel-Lo (Belgium)

Tel +32 16 351 011  
Fax +32 16 351 697

[www.te.com](http://www.te.com)  
[www.te.com/adckrone](http://www.te.com/adckrone)

TE Connectivity and TE connectivity (logo) are trademarks. Other logos, product and/or Company names might be trademarks of their respective owners.

While TE Connectivity has made every reasonable effort to ensure the accuracy of the information in this document, TE Connectivity does not guarantee that it is error-free, nor does TE Connectivity make any other representation, warranty or guarantee that the information is accurate, correct, reliable or current. TE Connectivity reserves the right to make any adjustments to the information contained herein at any time without notice. TE Connectivity expressly disclaims all implied warranties regarding the information contained herein, including, but not limited to, any implied warranties of merchantability or fitness for a particular purpose. The dimensions in this document are for reference purposes only and are subject to change without notice. Specifications are subject to change without notice. Consult TE Connectivity for the latest dimensions and design specifications.