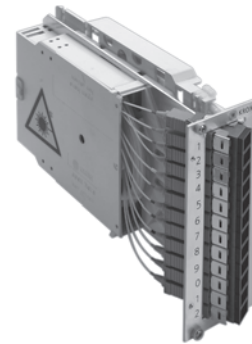
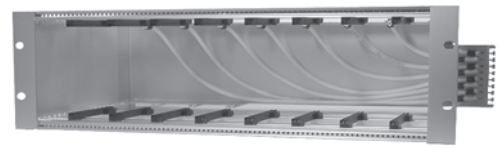


# ODP 96 Series

## Modular Termination Chassis—Eight Module Capacity

This 19-inch empty chassis (84 HP [8x10] x 3RU) accommodates up to eight connector modules (10 HP x 3RU) for a total capacity of up to 96 fibres. The chassis features a loose tube cable routing system at the back, leading to the individual insertion slots for connector modules. The chassis is made of aluminum and includes mounting hardware.



ODP 96 modular termination chassis

### Ordering Information

Description	Dimensions (HxWxD)	Catalogue Number
<b>Empty chassis</b> 84 HP (8 x 10) x 3RU	133mm x 482mm x 240mm	6833 2 725-08
<b>Connector module with singlemode fibre and connectors</b> 10 HP x 3RU	133mm x 50.8mm x 240mm	
12 SC UPC connectors, zirconia sleeve		6833 2 600-02
12 SC 8° APC connectors		6833 2 600-00
12 SC 9° APC connectors		6833 2 600-08
12 E2000 APC connectors		6833 2 600-05
12 FC UPC connectors, zirconia sleeve		6833 2 600-03
12 FC 8° APC connectors		6833 2 600-04
6 duplex LC 8° APC connectors		6833 2 600-06
6 duplex LC UPC connectors, zirconia sleeve		6833 2 600-07
Universal SFF UPC, zirconia sleeve (LC, MU, LX.5°)		6833 2 600-09
Universal SFF APC (LC, MU, LX.5°)		6833 2 600-10
<b>Connector module with multimode fibre and 12 SC connectors</b> (50/125) 10 HP x 3RU	133mm x 50.8mm x 240mm	6833 2 600-01
Cable guide		6833 2 722-01

# ODP 120/144 Series

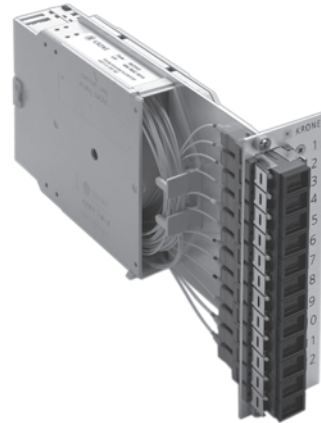
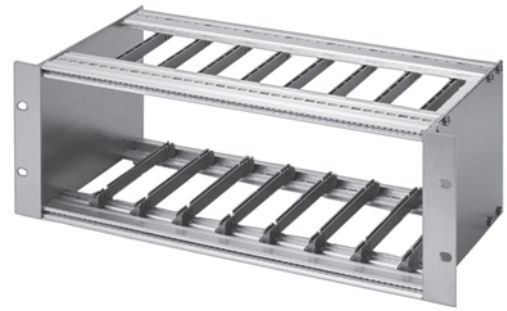
## Modular Termination Chassis—Ten Module Capacity

This 19-inch empty chassis (84 HP [10x8] x 3RU) accommodates up to ten connector modules (8 HP x 3RU) for a capacity of up to 120 fibres<sup>1</sup>. Modules include a front panel with connectors, cassette for excess cable lengths, and a splice cassette; splice protectors must be ordered separately. Buffered fibre pigtails are connected to the rear of the connectors. Modules with SC connectors are equipped with a patented Frontclip, which facilitates the adapters' handling during cleaning. The modules design complies with Deutsche Telekom AG's technical delivery condition No. 6060-3004.

Splice and storage modules are also available and can be installed along with connector modules in the same chassis to provide flexibility and match individual network requirements.

A 19-inch cable guide drawer must be ordered for the accommodation of loose tube fibres. The chassis is made of aluminum and includes mounting hardware.

<sup>1</sup>A chassis with a total capacity of up to 144 fibres (84HP (12x7) x 3RU) is available; please contact ADC KRONE for additional information.



ODP 120/144 modular termination chassis and module

**Ordering information follows on next page**

# ODP 120/144 Series

## Modular Termination Chassis—Ten Module Capacity

### Ordering Information

Description	Dimensions (HxWxD)	Catalogue Number
<b>Empty chassis</b> 84 HP (10 x 8) x 3RU	133mm x 482mm x 185mm	6833 2 300-00
<b>Cable guide drawer</b>	45mm x 482mm x 280mm	6833 2 301-00
<b>Connector module with singlemode connectors</b> 8 HP x 3RU	133mm x 41mm x 240mm	
12 SC UPC connectors, zirconia sleeve, with crimp splice holder		6833 2 201-03
12 SC 8° APC connectors, with crimp splice holder		6833 2 201-02
12 SC 8° APC connectors, with heat shrink splice holder		6833 2 203-02
12 E2000 8° APC connectors, without splice holder		6833 2 208-02
8 FC UPC connectors, zirconia sleeve, with heat shrink splice holder		6833 2 208-00
<b>Connector module with multimode connectors</b> 8 HP x 3RU	133mm x 41mm x 240mm	
12 SC connectors (50/125), with crimp splice holder		6833 2 201-05
12 SC connectors (62.5/125), with crimp splice holder		6833 2 201-06
<b>Splice module</b> 8 HP x 3RU Houses permanent connections or connections to connector modules; includes 2 splice cassettes with cover and mounting hardware; splice holders and splice protectors ordered separately	133mm x 41mm x 195mm	6833 2 204-00
<b>19" cable guide tray</b> 84 HP x 1RU Provides horizontal cable management; guides patch cords from chassis to vertical cable management in rack	45mm x 482mm x 100mm	6833 2 722-01
<b>19" storage drawer</b> Stores excess patch cord lengths; installs under a splice tray or chassis, or in the middle of a rack. Includes housing with moveable drawer, carrier elements, mounting hardware, fibre guides		
For ETSI installation (2 SU)	50mm x 530mm x 290mm	6829 1 104-00
For 19" installation (1RU)	45mm x 450mm x 400mm	6829 1 104-01
<b>Storage modules</b> 7 HP x 3RU Stores up to 4m excess patch cord length in a 19" termination/splice chassis	133mm x 36mm x 222mm	6833 2 422-00
<b>Dummy plate</b> Covers unused module slots in 19" chassis		
8 HP x 3RU	133mm x 41mm	6833 2 242-00
4 HP x 3RU	133mm x 20mm	6833 2 242-01
7 HP x 3RU	133mm x 36mm	6833 2 242-02
10 HP x 3RU	133mm x 51mm	6833 2 242-03

# ODP Series

## Value-Added Modules

### Splitter Module

The splitter module is designed for vertical installation in the ODP 500 series chassis and provides symmetric optical power splitting. The module features SC or E2000 adapters installed in the angled front plate for patch cord termination. The module is tested in accordance with EN 181 000 and Telcordia (Bellcore) GR-1209-CORE.



ODP Series value-added splitter module

### Specifications

<b>Configuration:</b>	1 x 2 to 2 x 8
<b>Fibre:</b>	9/125/250µm (SMF-28)
<b>Wavelength Range:</b>	1310 ± 40nm and 1550 ± 40nm
<b>Dimensions (HxWxD):</b>	133mm x 40.6mm x 184mm (3RU x 8HP x 184mm)
<b>Temperature Range:</b>	-25°C to +70°C

Optical Specifications	1x2	1x4	1x6	1x8
	2x2	2x4	2x6	2x8
<b>Insertion loss including connectors/adapters</b>				
Minimum	3.0dB	5.6dB	7.0dB	8.2dB
Maximum	4.3dB	7.9dB	10.2dB	11.6dB
<b>Thermal stability (-25°C to +70°C)</b>	±0.2dB	±0.4dB	±0.4dB	±0.5dB
<b>Polarisation stability</b>	≤0.3dB			
<b>Directivity</b>	>55dB			
<b>Return loss</b>				
With UPC connectors	>50dB			
With APC connectors	>55dB			

### Ordering Information

Description	Catalogue Number
<b>1x8* splitter module for ODP series chassis</b>	
SC UPC adapters	6833 2 450-00
SC 8° APC adapters	6833 2 450-01
SC 9° APC adapters	6833 2 450-02
E2000 8° APC adapters	6833 2 450-04

\*Coupling/splitter ratios from 1x2 up to 2x8 are available. Please contact ADC KRONE for ordering information

# ODP Series

## Value-Added Modules

### Monitor Module

The monitor module is designed for vertical installation in the ODP 500 series chassis. The module features SC or E2000 adapters installed in the angled front plate for patch cord termination. The module is tested in accordance with EN 181 000 and Telcordia (Bellcore) GR-1209-CORE.



ODP Series value-added monitor module

### Specifications

- Configuration:** 4x (1x2)
- Split Ratio:** 90/10%
- Fibre:** 9/125/250  $\mu\text{m}$  (SMF-28)
- Wavelength Range:** 1310  $\pm$  40nm and 1550  $\pm$  40nm
- Dimensions (HxWxD):** 133mm x 50.8mm x 184mm  
(3RU x 8HP x 184mm)
- Temperature Range:** -25°C to +70°C

Optical Specifications	
<b>Maximum insertion loss including connectors/adapters</b>	
For operating signal (90%)	1.2dB
For monitoring signal (10%)	12.1dB
<b>Thermal stability (-25°C to +70°C)</b>	$\pm$ 0.2dB
<b>Polarisation stability</b>	$\leq$ 0.3dB
<b>Directivity</b>	$>$ 55 dB
<b>Return loss</b>	
With UPC connectors	$>$ 50dB
With APC connectors	$>$ 55dB

### Ordering Information

Description	Catalogue Number
<b>4x (90/10%)<sup>1</sup> monitor module for ODP series</b>	
SC UPC adapters	6833 2 451-00
SC 8° APC adapters	6833 2 451-01
SC 9° APC adapters	6833 2 451-02
E2000 8° APC adapters	6833 2 451-04

<sup>1</sup> Other power splitting ratios are available. Please contact ADC KRONE for ordering information