

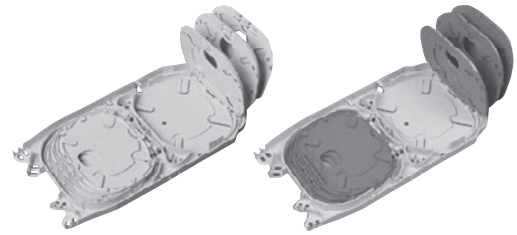
# Splice Accessories

## Splice Cassettes for Single Circuit Management

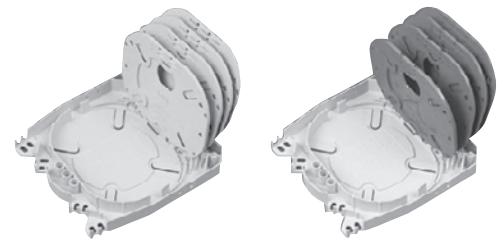
These splice cassettes feature subscriber trays, each tray accommodating two splices or providing storage for uncut and dark fibres. The trays are hinged and can be opened individually, allowing for separate installation of fibre pairs without disturbing other fibres.

The FAME 4 features four subscriber trays stacked on top of each other. The FAME 6 features six subscriber trays, in two blocks of three. Both trays accommodate either crimp or heat shrink splice protectors. A cover is available for the FAME 6 and can be snapped on or fixed by means of hinges.

Splice protectors are ordered separately.



FAME 6 splice cassette



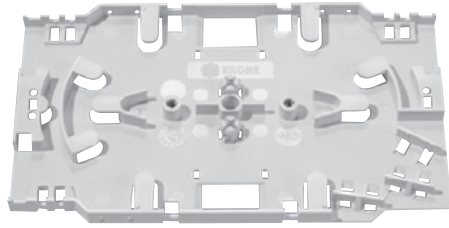
FAME 4 splice cassette

### Ordering Information

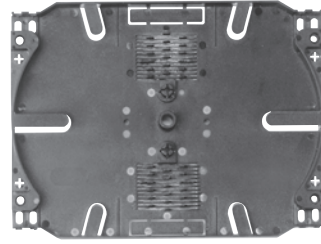
Description	Dimensions (HxWxD)	Catalogue Number
<b>FAME 4</b> , single fibre management system for 8 fibres; includes aluminum cover with hinges, cable ties for loose tube fibres, 1 mounting screw	16mm x 112mm x 112mm	
For crimp splice protectors (grey subscriber tray/trays)		6769 2 260-00
For heat shrink splice protectors (blue subscriber tray/trays)		6769 2 260-01
<b>FAME 6</b> , single fibre management system for 12 fibres; includes cable ties for loose tube fibres	10mm x 112mm x 204mm	
For crimp splice protectors (grey subscriber tray/trays)		6769 2 261-00
For heat shrink splice protectors (blue subscriber tray/trays)		6769 2 261-01
Cover for FAME 6		6769 2 265-00
Hinge to attach cover to FAME 6		6769 2 340-00

# Splice Accessories

## Splice Cassettes



KRONE® splice cassette



UK 24 splice cassette

### Ordering Information

Description	Dimensions (HxWxD)	Catalogue Number
<b>KRONE splice cassette</b> Accommodates a maximum of 12 splices; loose tubes can be fed at an angle or straight in; cassettes can be stacked; a cover is available and can be snapped on or fixed by means of hinges. <i>Splice holders and splice protectors ordered separately</i>	8mm x 92mm x 155mm	6833 2 239-01
Cover for KRONE splice cassette	2mm x 92mm x 155mm	6833 2 240-01
Hinge to attach cover to KRONE splice cassette		6769 2 340-00
<b>UK 24 splice cassette</b> Accommodates a maximum of 24 splices; includes two integrated crimp splice holders (each supports 12 crimp splice protectors, <i>ordered separately</i> ); other splice holders can be ordered and installed; cassettes can be stacked; a cover is available	10mm x 120mm x 62.5mm	6769 2 333-00
Cover for UK 24 splice cassette	1mm x 120mm x 162mm	6769 3 333-00

# Splice Accessories



Heat shrink splice holder



Crimp splice holder

## Ordering Information

Description	Quantity per Pack	Catalogue Number
<b>Heat shrink splice protectors</b> (for 6 splices)		
50mm for KRONE® and UK 24 splice cassettes	25	6800 2 033-25
35mm for FAME splice module	25	6800 2 052-00
<b>Heat shrink splice holder</b> Accommodates up to 6 heat shrink splices; used in KRONE® and UK 24 splice cassettes	2	6800 2 034-02
<b>Crimp splice protectors</b> (for 12 splices)	150	6800 2 035-15
<b>Crimp splice holder</b> Accommodates up to 12 crimp splices	2	6800 2 036-02

## Miscellaneous Accessories

### Ordering Information

Description	Quantity per Pack	Catalogue Number
<b>Dummy plugs</b> Used to cover unused adapter ports in 19" termination/splice trays		
For ST® adapters	25	9100 3 008-00
For SC/E2000 adapters	25	6833 2 229-00
For duplex SC adapters	25	6824 2 301-00
<b>Loose tube separator</b> Separates (or brings together) fibres from loose tube fibres, which are then guided in a distribution frame by means of protective tubing. Maximum diameter of loose tubes: 2.8mm. Includes 5 separation adapters, 3 metres adapter guide sleeve, 30 metres protective tubing	1	6833 2 482-00
<b>Protective radius-controlled tubing for loose tube cables</b> Protects and leads loose tube fibres in a frame while maintaining minimum bend radius. Length: 10 metres	1	
Inner diameter: 3.1mm Outer diameter: 5.0mm		6833 2 441-00
Inner diameter: 4.2mm Outer diameter: 6.4mm		6833 2 441-01