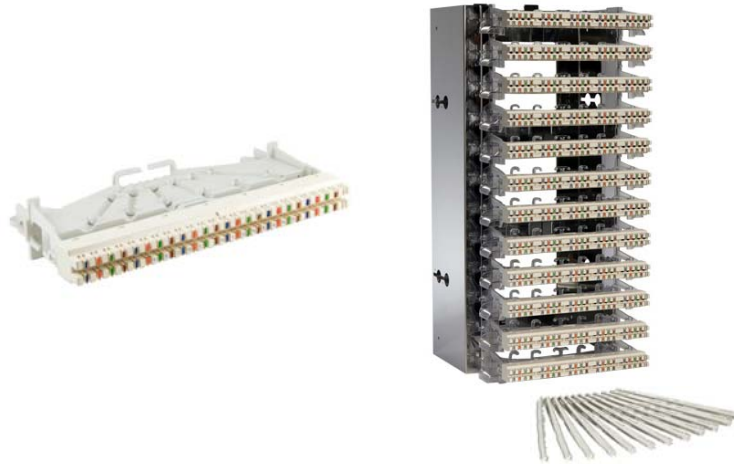


# TrueNet®

## Category 6 HighBand® Module Kits

Issue 1



12-way Kit shown

Colour coded for ease of installation, each HighBand module allows for termination of 4-pair UTP cables. HighBand technology enables the highest performing Category 6 module in the world with transmission performance headroom far exceeding all local and international standards.

The rear cable manager provides cable management for incoming cables and makes installation easier. Incoming cables are held in place by built-in guides that direct the cable to the point of termination. Each cable is secured firm enough to prevent the need for additional Velcro ties.

The label holder clips into position on the face of each module, providing a secure fit and allows patching and jumper termination to take place whilst it is fitted.

The 12-way wall mount frame is made from high-grade stainless steel, providing strength and superior corrosion resistance. Extra depth and width has been provided to allow for Category 6 bend radius requirements. Velcro tie off points have been included to ensure tidy installation practices and ease of cable routing.

### Features:

- Each module will accommodate 6 x 4-pair UTP Category 6 cables
- 45° silver-plated IDCs provide secure, reliable gas-tight connections
- Modules are terminated with the standard ADC KRONE termination tools 6089 2 003-00 or 6417 2 055-01, and may also be terminated with a 110 tool
- 4-pair to 4-pair patch cords are available for Patch-by-Exception installations
- 4-pair to RJ45 cords are available to interface with network and other equipment

### Specifications

#### HighBand Modules:

Environment for use: ..... Indoors or in dry enclosure rated IP54 or greater.  
Operating temperature range: ..... -20°C to +80°C

SPEC SHEET



[adckrone.com/au](http://adckrone.com/au) • 1800 801 298 • [helpdesk.au@adckrone.com](mailto:helpdesk.au@adckrone.com)

# TrueNet®

## Category 6 HighBand Module Kits

Maximum relative humidity: ..... 93% non-condensing  
 Wire range for solid & stranded copper conductors: ..... 0.4-0.65mm (26-22 AWG)\*

\* A maximum of 2 equal, solid conductors only, of up to 0.5 conductor diameter can be terminated per slot. Only 1 conductor of stranded wires per slot can be terminated. If any conductors >0.5 have been terminated, reversal to smaller conductors is no longer possible.

Wire insulation diameter range (PE, PVC): ..... Typically 0.7-1.4mm  
 Number of wire reterminations: ..... Up to 200  
 Wire insertion force (0.5 conductor diameter): ..... 6N  
 Wire pull out force, radial (0.5 conductor diameter): ..... 5N  
 Wire pull out force, axial (0.5 conductor diameter): ..... 35N  
 Number of patching cycles, Modules: ..... Up to 750  
 Patch plugs: ..... Up to 200  
 Transmission & reliability: ..... Meet & exceed Category 6  
 (ISO/IEC 11801 & TIA/EIA 568-B.2-1)

Change of contact interface resistance after reliability testing  
 to ISO/IEC 11801 and TIA/EIA 568B per through connection,  
 ie. 2 insulation displacement and 1 disconnection contact joint: ..... <5mΩ typical  
 Voltage/current rating at 25°C ambient: ..... 150VAC at 2.5A max.  
 Dielectric strength: ..... 1.5kVAC  
 Surge voltage strength (1.2/50 sec wave shape): ..... 2.5kV  
 Surge current strength (8/20 sec wave shape): ..... 3kA (Modules)  
 ..... 0.5kA (Patch Plugs)  
 Insulation resistance: ..... 50,000MΩ at 500VDC  
 Safety: ..... UL 1863  
 Flammability rating of plastic housing: ..... UL 94 V-0  
 ACMA compliant

### Ordering Information

Description	Quantity	Product No.
<b>Category 6 HighBand Module Kit</b> Consists of (12) 25-pair Highband Category 6 modules, (12) label holders and (12) rear cable managers	1 Kit	6468 5 600-10
<b>Category 6 HighBand 12-way Kit</b> Consists of (1) wall mount frame, (12) 25-pair HighBand Category 6 modules including rear cable manager, and (12) label holders	1 Kit	6450 1 101-10
<b>Category 6 HighBand 36-way Kit</b> Consists of (3) wall mount frame, (36) 25-pair HighBand Category 6 modules including rear cable manager, and (36) label holders	1 Kit	6450 1 102-10

SPEC SHEET



**www.adckrone.com/au**  
 AUSTRALIA 2 Hereford Street, Berkeley Vale NSW 2261  
 Mailing Address: PO Box 335, Wyong NSW 2259, Australia  
 Sales Support: 1800 801 298

**www.adckrone.com/nz**  
 NEW ZEALAND 2 Nevis Street, Petone, Wellington  
 Mailing Address: PO Box 38-177, Wellington Mail Centre 6008, New Zealand  
 Sales Support: 0800 657 663

ADC Telecommunications, Inc., P.O. Box 1101, Minneapolis, Minnesota USA 55440-1101  
 Specifications published here are current as of the date of publication of this document. Because we are continuously improving our products, ADC reserves the right to change specifications without prior notice. At any time, you may verify product specifications by contacting our headquarters office in Minneapolis. ADC Telecommunications, Inc. views its patent portfolio as an important corporate asset and vigorously enforces its patents. Products or features contained herein may be covered by one or more U.S. or foreign patents. An Equal Opportunity Employer

**6468 5 600-10, 6450 1 101-10 & 102-10 / Issue 1 © 2010 ADC Telecommunications, Inc. All Rights Reserved.**