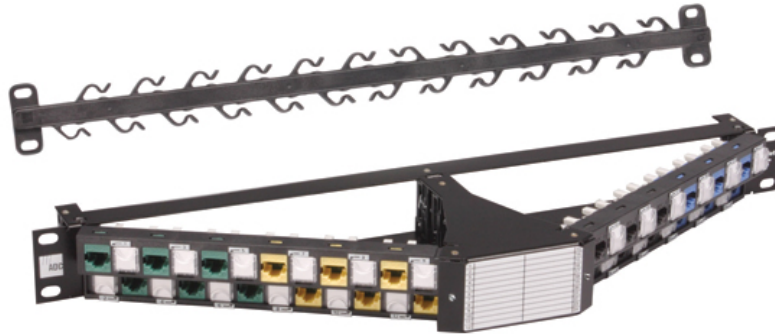


TrueNet®

Category 6_A 24-port Angled Patch Panel with Cable Minder

Issue 4



The Category 6_A Angled Patch Panel optimises 10 Gb/s transmission performance with offset jack positioning to counter the negative effects of alien cross talk. The angled port design improves all aspects in managing horizontal cable and patch cables while improving density when used with Glide Cable Management. It also makes modifications easy, avoids unintended disconnects and cable damage, and protects bend radius to avoid violations that result in signal degradation.

Installed in high-performance networks worldwide, the system's patent-pending design minimises alien cross talk and insertion loss and meets the performance requirements of IEEE 802.3an and TIA 568-B.2-10 draft standards.

Features:

- Angled design eases stress on patch cords while maximising 10 Gigabit performance
- High-density design with 24 ports in a single rack unit
- Unique polymer design helps eliminate alien cross talk
- Supplied with 24 black Category 6_A outlets
- Rear cable manager included

Specifications

| | |
|---|---|
| Environment for use: | Indoors, in closed rooms |
| Operation temperature range: | -10°C to +70°C |
| Relative humidity: | ≤93% non-condensing |
| RJ Socket, 8 positions, general specification: | FCC 68.500 |
| | IEC 603-7 |
| RJ Interface resistance: | ≤20mΩ |
| Wire diameter range for solid & stranded copper conductors: | 0.40 – 0.65mm* (26-22 AWG) |
| Wire Insulation diameter range (PE, PVC): | 0.7 – 1.40mm |
| Transmission, performance and reliability: | ≥TIA/EIA 568-B.2-10 Category 6 _A |
| | ≥ISO/IEC 11801 ed.2.1 |

SPEC SHEET



adckrone.com/au • 1800 801 298 • helpdesk.au@adckrone.com

TrueNet®

Category 6_A 24-port Angled Patch Panel

Number of plug insertion cycles: ≥750
Number of wire terminations: ≥10
Flammability of plastic components: UL 94 V-0
Safety: UL1863
Overall nominal dimensions: 44.5mm high x 483mm wide x 140mm deep

ACMA Compliant

RoHS compliant to the European Union Directive 2002/95/EC

* If any conductors have been terminated, reversal to smaller conductors is no longer possible.

Ordering Information

| Description | Quantity | Colour | Product No. |
|--|----------|--------|-------------------|
| Category 6 _A 24-port Angled Patch Panel, 1RU Consists of (1) 24-port angled panel, (24) Category 6 _A RJ45 outlets and (1) cable manager | Box of 1 | Black | TPNP-24APC10-BK-A |
| Stand Off Bracket | Box of 2 | Black | TPNP-NNC10-WM-BKT |

SPEC SHEET



www.adckrone.com/au

AUSTRALIA 2 Hereford Street, Berkeley Vale NSW 2261
Mailing Address: PO Box 335, Wyong NSW 2259, Australia
Sales Support: 1800 801 298

www.adckrone.com/nz

NEW ZEALAND 2 Nevis Street, Petone, Wellington
Mailing Address: PO Box 38-177, Wellington Mail Centre 6008, New Zealand
Sales Support: 0800 657 663

ADC Telecommunications, Inc., P.O. Box 1101, Minneapolis, Minnesota USA 55440-1101
Specifications published here are current as of the date of publication of this document. Because we are continuously improving our products, ADC reserves the right to change specifications without prior notice. At any time, you may verify product specifications by contacting our headquarters office in Minneapolis. ADC Telecommunications, Inc. views its patent portfolio as an important corporate asset and vigorously enforces its patents. Products or features contained herein may be covered by one or more U.S. or foreign patents. An Equal Opportunity Employer

TPNP-24APC10-BK-A / Issue 4 © 2010 ADC Telecommunications, Inc. All Rights Reserved.