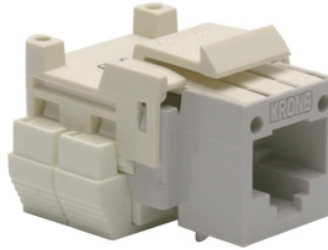


TrueNet[®] Highway Media™ Outlet

Issue 5



An outlet to replace the 610 and 611 telephone sockets currently used by Telstra for domestic premises.

Features:

- The outlet is an 8 position RJ type right-angled Keystone outlet with only the 4 centre contacts fitted
- Each contact in the RJ outlet has 2 IDC contacts connected to it for independent termination of different wire sizes in a “daisy chain” situation
- Wire termination is achieved with either a standard ADC KRONE termination tool or with the termination caps included with the outlet

Specifications

Environment for use:	Indoors, in dry closed rooms
Operating temperature range:	-10°C to +50°C
Maximum relative humidity:	≤93% non condensing
RJ socket, 8 positions, general specification:	FCC 68.500 and IEC 603-7
Number of plug insertion cycles:	≥500
Contact material:	high strength spring copper alloy
Contact plating:	
IDC contacts:	silver plated
RJ contacts:	gold plated
RJ interface resistance:	≤20mΩ

LSA-PLUS Insulation Displacement Contacts:

Copper conductor diameter:	0.40-0.65mm (26-22 AWG)
Multistrand Conductor:	7/0.2-7/0.32mm
Insulation diameter for each IDC:	0.70 –1.40mm
Contacts resistance:	≤1mΩ typical
Number of wire re-terminations:	≥200

NOTE: A maximum of 2 equal diameter solid conductors only can be terminated per slot, and only 1 conductor of stranded wires per slot can be terminated.

Unequal diameter wires must be terminated in separate wire slots.

SPEC SHEET



adckrone.com/au • 1800 801 298 • helpdesk.au@adckrone.com

TrueNet[®] Highway Media™ Outlet

Electrical Rating of Complete Assembly at 25°C and 50%RH:

Voltage rating: ≤150VAC
 Current rating: ≤2A
 Insulation resistance: ≥100MΩ at 500VDC
 Housing materials: PBT, ASA/PC
 Flammability rating of plastic housing: UL 94 V0

Approvals:

ACMA
 FCC compliant
 Telstra specification 1603 compliant.
 UL 1863



Ordering Information

Description	Quantity	Colour	Product No.
Highway Media Telephone Outlet, 8P4C	Bag of 10	Grey	6467 1 105-00
Highway Media Telephone Outlet, 8P4C	Box of 100	Grey	6467 4 105-10

The outlet is to be used in conjunction with the following dedicated mounting arrangements and accessories:

6467 1 108-00 & 6467 1 110-00 Single & Dual Flush Mount Wall Plate

The wall plate can be mounted either vertically or horizontally whilst still maintaining the RJ contacts of the outlet to the top. The outlet may be removed from the front of the wall plate whilst still mounted on the wall. The wall plate is compatible with standard HPM/Clipsal mounting plates and stand-off blocks, and has provision for outlet identification.

6467 1 112-00 & 6467 1 113-00 Single & Dual Surface Mounting Box

The box has provision for outlet identification.

6467 1 114-00 Upgrade Wall Mount Kit

A wall mount kit that will accept Telstra's standard wall mount telephone (eg Touchfone 400). The kit comes complete with fly lead to connect the telephone to the fitted outlet and has provision for outlet identification.

6467 1 115-00 Spring Loaded Shutter

A spring loaded, self closing dust cover that will clip into the holes provided on the face of the outlet.

6467 1 116-00 Mounting Adaptor

TrueNet[®]

Highway Media[™] Outlet

A mounting adaptor that will accept the outlet and allow this to be clipped into a standard HPM or Clipsal faceplate. The adaptor will also allow the spring loaded dust cover to be fitted.

6467 1 117-00 Gel Filled Termination Cap

A termination cap that can be used to terminate the wires in the outlet in lieu of a standard ADC KRONE termination tool and is gel filled to provide greater environmental protection against corrosion for the ends of the terminated wires in harsh environments.

6467 1 118-00 Dust Cover

A clear dust cover that clips over the base of the wall plates to prevent paint splashes on the wall plate if the wall plate is mounted prior to painting the wall.

SPEC SHEET



www.adckrone.com/au

AUSTRALIA 2 Hereford Street, Berkeley Vale NSW 2261
Mailing Address: PO Box 335, Wyong NSW 2259, Australia
Sales Support: 1800 801 298

www.adckrone.com/nz

NEW ZEALAND 2 Nevis Street, Petone, Wellington
Mailing Address: PO Box 38-177, Wellington Mail Centre 6008, New Zealand
Sales Support: 0800 657 663

ADC Telecommunications, Inc., P.O. Box 1101, Minneapolis, Minnesota USA 55440-1101
Specifications published here are current as of the date of publication of this document. Because we are continuously improving our products, ADC reserves the right to change specifications without prior notice. At any time, you may verify product specifications by contacting our headquarters office in Minneapolis. ADC Telecommunications, Inc. views its patent portfolio as an important corporate asset and vigorously enforces its patents. Products or features contained herein may be covered by one or more U.S. or foreign patents. An Equal Opportunity Employer

6467 1 105-00 & 4 105-10 / Issue 5 © 2008 ADC Telecommunications, Inc. All Rights Reserved.