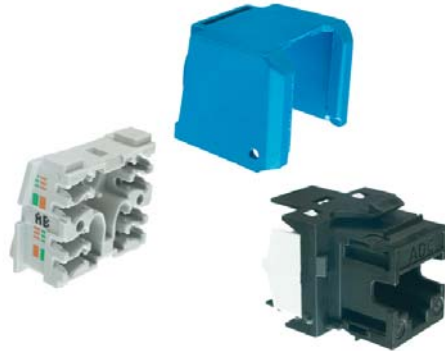


TrueNet®

Category 6 KM8 RJ45 Outlet

Issue 1



A Category 6 KM8, 8-position modular outlet for terminating UTP cable. The KM8 outlet is a keystone design, the global socket mounting standard ensuring compatibility with the diverse range of faceplates systems throughout the world.

An internal cable manager holds cable pairs in place up to the termination point. This prevents untwisting and buckling of the conductors thereby guaranteeing performance for every installation.

These outlets are compliant to the Category 6 standard at a component level.

Features:

- Performance exceeding Category 6 specifications up to 250MHz
- KM8 cable managed outlet in keystone format
- Fully interoperable and backwards compatible
- Third party certification at a component level

Specifications

Mechanical Data:

Plug / socket mating cycles:	≥750 (IEC / EN 60603-7 series)
Plug / socket insertion / withdrawal force:	≤20N (IEC / EN 60603-7 series)
Number of IDC re-terminations:	≥30
Conductor diameter:	0.5-0.65mm (AWG 24-22)
Insulation diameter:	0.7-1.6mm
Nominal dimensions:	21mm high x 24mm wide x 35mm deep
Operating temperature:	-10° to +60°C
Operating humidity:	≤95% R.H. Non condensing

SPEC SHEET



adckrone.com/au • 1800 801 298 • helpdesk.au@adckrone.com

TrueNet®

Category 6 KM8 RJ45 Outlet

Electrical:

Insulation resistance: >500MΩ
Dielectric strength: Contact / contact 1.0kV
Current carrying capacity: ≥1A
Typical plug / outlet contact resistance: ≤20mΩ
Typical IDC contact resistance: 1mΩ

ACMA Compliant

RoHS compliant to the European Union Directive 2002/95/EC

Ordering Information

Description	Quantity	Colour	Product No.
Category 6 KM8 RJ45 Outlet	Bag of 1	White	6830 1 800-01
Category 6 KM8 RJ45 Outlet	Bag of 1	Black	6830 1 800-04
Category 6 KM8 RJ45 Outlet	Bag of 1	Red	6830 1 800-05
Category 6 KM8 RJ45 Outlet	Bag of 1	Blue	6830 1 800-06
Category 6 KM8 RJ45 Outlet	Bag of 1	Yellow	6830 1 800-08

SPEC SHEET



www.adckrone.com/au

AUSTRALIA 2 Hereford Street, Berkeley Vale NSW 2261
Mailing Address: PO Box 335, Wyong NSW 2259, Australia
Sales Support: 1800 801 298

www.adckrone.com/nz

NEW ZEALAND 2 Nevis Street, Petone, Wellington
Mailing Address: PO Box 38-177, Wellington Mail Centre 6008, New Zealand
Sales Support: 0800 657 663

ADC Telecommunications, Inc., P.O. Box 1101, Minneapolis, Minnesota USA 55440-1101
Specifications published here are current as of the date of publication of this document. Because we are continuously improving our products, ADC reserves the right to change specifications without prior notice. At any time, you may verify product specifications by contacting our headquarters office in Minneapolis. ADC Telecommunications, Inc. views its patent portfolio as an important corporate asset and vigorously enforces its patents. Products or features contained herein may be covered by one or more U.S. or foreign patents. An Equal Opportunity Employer

6830 1 800-XX / Issue 1 © 2009 ADC Telecommunications, Inc. All Rights Reserved.