

# TrueNet<sup>®</sup>

## Capabilities Overview



KRONE

End-to-End Enterprise Solutions

# Enterprise Applications Infrastructure

## Building for Bandwidth

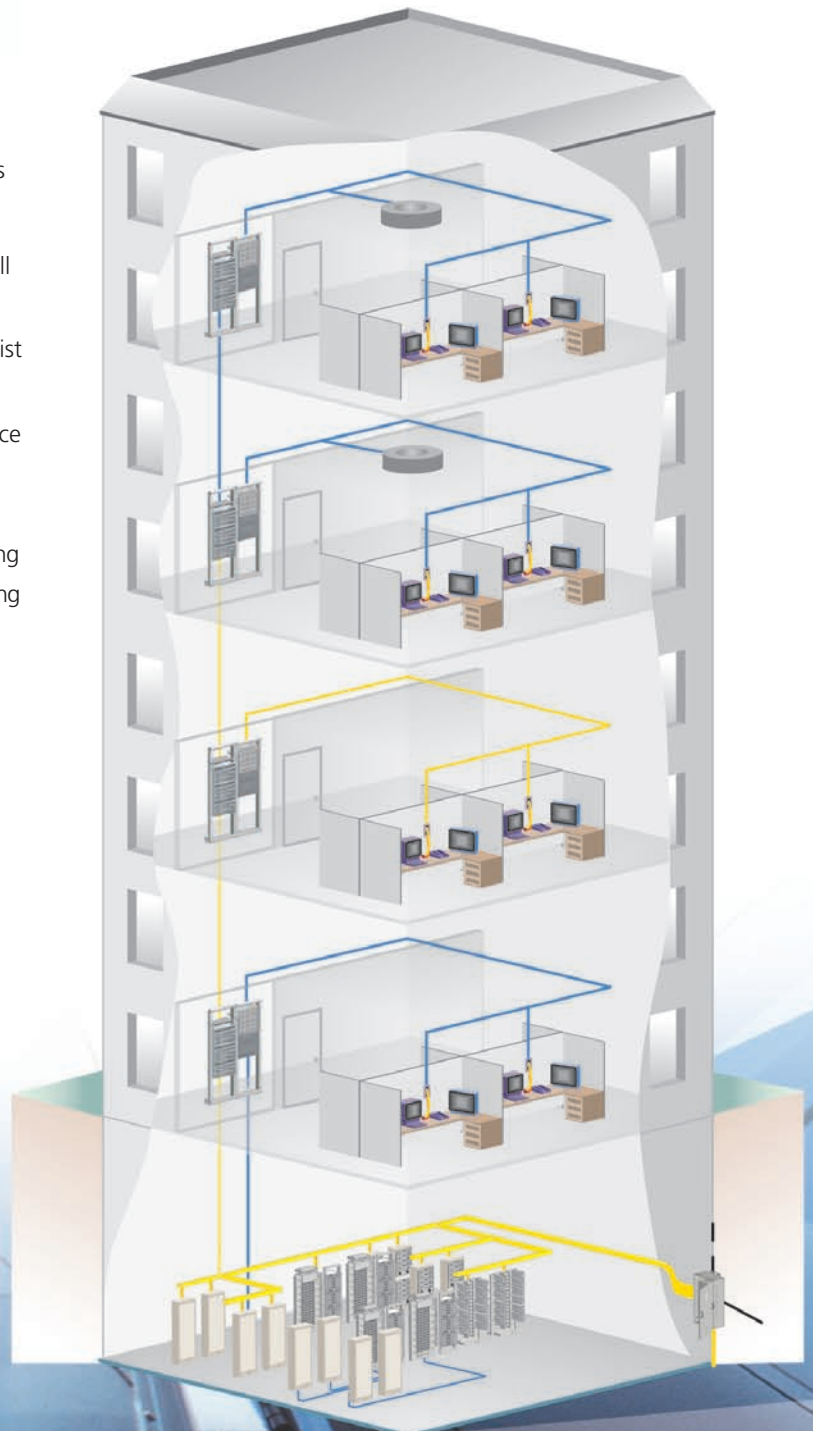
In large and small organisations around the world, the need for more bandwidth is straining networks and data centres. From businesses to schools, and hospitals to government agencies, new technologies and advanced business requirements mean rethinking your entire enterprise infrastructure. At ADC KRONE, we call it *building for bandwidth*.

Indeed, many of the applications below didn't even exist just a few years ago:

- |  |  |
|--|--|
| <input type="checkbox"/> Voice over IP         | <input type="checkbox"/> Regulations Compliance    |
| <input type="checkbox"/> Security              | <input type="checkbox"/> Sarbanes-Oxley            |
| <input type="checkbox"/> Wi-Fi                 | <input type="checkbox"/> Disaster Recovery         |
| <input type="checkbox"/> Video Conferencing    | <input type="checkbox"/> Complex Data Modelling    |
| <input type="checkbox"/> Intelligent Buildings | <input type="checkbox"/> Real-Time Data Processing |
| <input type="checkbox"/> RFID                  | <input type="checkbox"/> E-mail Archival           |
| <input type="checkbox"/> SAN                   |  |

Today, however, these are the applications that are driving the growth explosion for more bandwidth. And more applications are on the horizon:

- What applications will you be asked to deliver?
- How will you continue to maintain your network's high-reliability?
- How flexible does your network need to be?
- How will you measure cost vs. performance?



**“ADC KRONE is committed to the enterprise market as a complete solutions provider for multi-national organisations around the globe.”**

Pat O'Brien, President  
ADC KRONE Global Connectivity Solutions

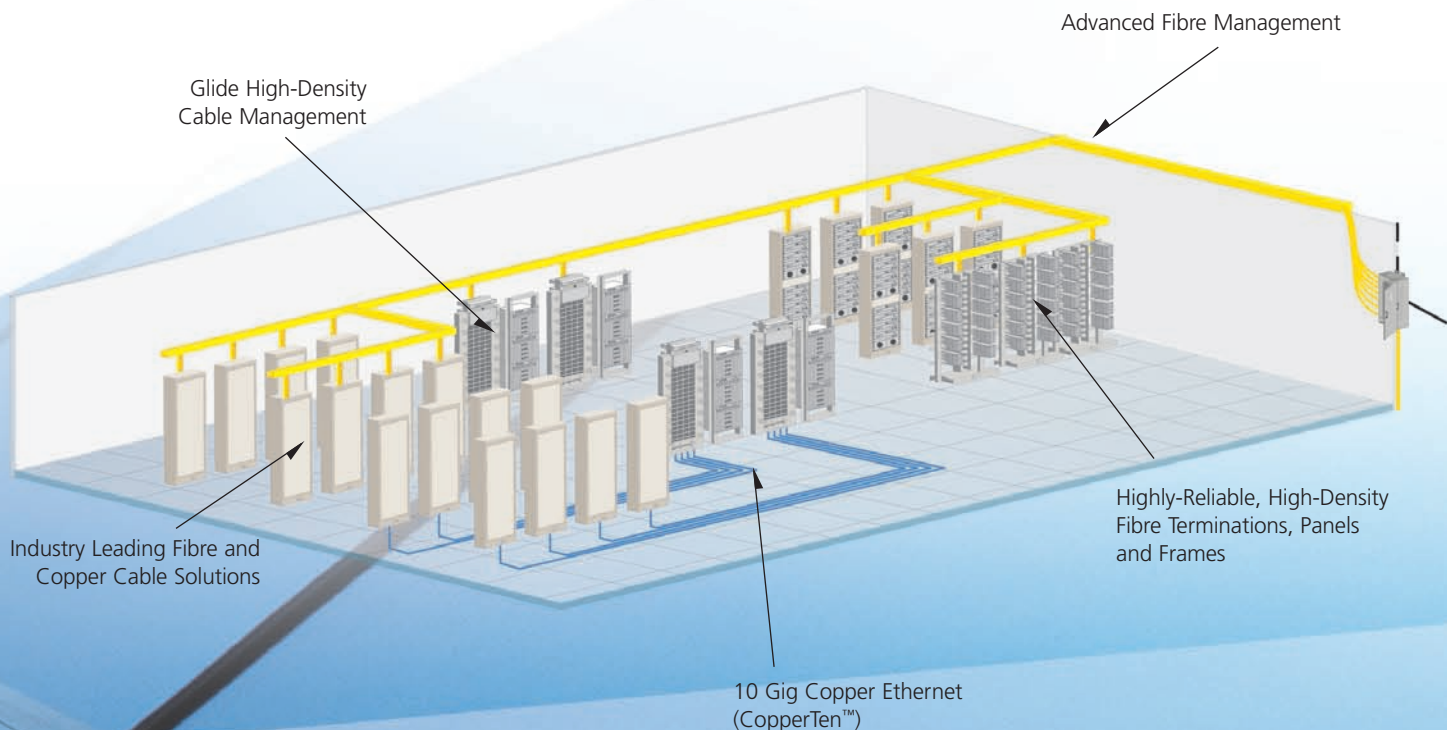
## Data Centre-Grade Infrastructure Solutions

The data centre is the hub of most organisations. But it's surprising how little thought is typically given to the physical layer of the data centre: the network infrastructure. Considering that your network infrastructure most likely will support three generations of active equipment, or 10-20 years, more care should be given to the choices made at the all-important physical layer. This is especially true when you consider that 70% of network downtime can be attributed to physical layer problems. Specifically, cabling faults. Indeed, millions of dollars can be lost in a matter of minutes if networks go "down." With this much at stake, and the fact that your physical layer expense is just 5-10

percent of your data centre investment, why would you even consider a structured cabling solution that is not true data centre-grade.

ADC KRONE has a long history of delivering high-speed, high-bandwidth, communication networks for large institutions. These high-reliability enterprise networks have infrastructures that perform to the multi-gigabit technologies. This experience is built into every TrueNet system component.

**“Seventy percent of network downtime can be attributed to physical layer problems. Specifically, cabling faults.”**



# TrueNet®: True End-to-End Solutions

The breadth and depth of ADC KRONE's global line of network infrastructure products is unmatched by any other firm. ADC KRONE's TrueNet brand of structured cabling products and solutions provides a multitude of Cable, Connectivity and Cable Management solutions from the data centre to the desktop.

In addition, all TrueNet solutions are supported by the best warranty in the business, a 20-year performance and applications warranty.



*Fibre Connectivity Solutions*

## Fibre Connectivity Solutions

In the backbone or to the desk, optical networks achieve superior performance with ADC KRONE's fibre connectors, patch cords, raceways, and panels featuring integrated cable management and bend radius protection. Proper cable management practices make fibre networks less susceptible to accidental damage, quicker to install, less expensive to own and operate over the long haul and easier to expand as needs grow. The ADC KRONE enterprise portfolio of connectivity solutions is both wide and deep:

- LKH Fibre Panels
- RMG Panels
- Fibre Optic Cable, Preterminated Cable Assemblies, Patch cords
- Fibre Management Trays, FL 2000 Panels, FPL Panels
- Next Generation Frame, FiberGuide®
- MPO Solutions



*TrueNet Next Generation Frame*

## The TrueNet Next Generation Fibre Frame

ADC KRONE's Next Generation fibre frame is designed for high-fibre count (Up to 2304 terminations per bay) applications such as data centres. Its modularity provides you with "invest as you grow" flexibility. This complete product line is designed to fit a variety of termination, splice and storage applications. Optimised through-space reduces jumper pile-up and congestion, and minimises the risk of microbends or damage to the fibre. ADC KRONE designs also offer bend-radius protection at every turn to ensure network performance and reliability.

## TrueNet Fibre Optic Cable

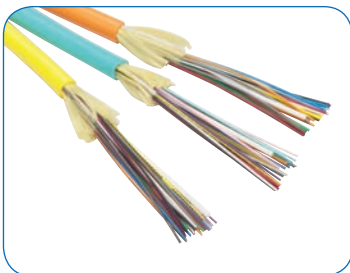
ADC KRONE offers one of the most comprehensive fibre optic product portfolios in the industry. The expansive fibre cable selection provides a solution set with industry leading performance. The following is just a sample of ADC KRONE's fibre portfolio:

### Indoor:

- Low Smoke, Zero Halogen Riser – 4 to 24 fibres
- Horizontal cable; – 2.0, 3.0mm diameters

### Outdoor:

- Loose tube cable design – 2 to 72 fibres



*TrueNet Fibre Optic Cable*

## Cable Management: Fibre Cable Raceway Systems

ADC KRONE's FiberGuide® Fibre Management systems offer the greatest breadth of optical raceway products in the industry. In response to customer requirements, ADC KRONE continues to innovate and improve FiberGuide Systems, adding greater flexibility and driving down installation time to ensure a smooth deployment. The FiberGuide system is a complete set of products designed and manufactured to ensure total off-frame protection and ease of use.

The four key elements of fibre cable management are bend radius protection; cable and connector access; cable routing paths and physical protection.

## TrueNet® Structured Cabling System

ADC KRONE offers a wide variety of copper cable and connectivity solutions to meet the requirements of critical data transmissions. The cable portfolio includes CopperTen™ Augmented Category 6 cable and connectivity for the emerging 10Gbps Ethernet over UTP standard.

CopperTen Modular Jack features LSA-PLUS® silver-plated 45-degree angled contacts for the most secure and reliable connections available.

## Power-over-Ethernet Solutions

ADC KRONE's Midspan Power-over-Ethernet (POE) Controllers provide a flexible way to power IP telephony and other applications over a local area network. These systems are but one example of a full-line of POE solutions at ADC KRONE. The IEEE 802.3af-compliant power source ensures reliability of service for Ethernet devices such as VoIP telephones, wireless access points, security cameras, badge readers and other applications. One cable provides both power and data.

## Digivance WFX

The Digivance WFX product family is a third generation Wi-Fi solution for enterprise customers who seek a scalable, cost effective solution to deliver in-building Wi-Fi access. It includes solutions for a broad range of applications, from branch offices where bandwidth is not an issue, to hospitals and campuses where maximum bandwidth is required to support an increasing number of Wi-Fi customers and applications.

## Work Area Solutions

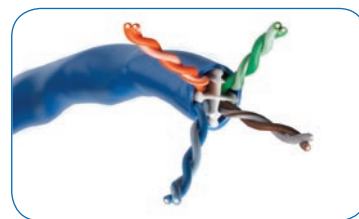
ADC KRONE offers a wide range of Work Area Solutions for the TrueNet Structured Cabling System. These include modular jacks, adaptors and connectors for your voice, data, and video needs over copper and fibre. Our Work Area Solutions include a broad selection of faceplates, surface mount boxes and patch panels that meet any of your network requirements.

## Building Entrance Terminals

ADC KRONE's family of Building Entrance Terminals for both inside and outside applications are built with our traditional focus on high quality and durability. These terminals promise long service life in harsh, outside plant environments and help ensure network reliability and flexibility.



*Fibre Cable Raceway Systems*



*TrueNet Structured Cabling System*



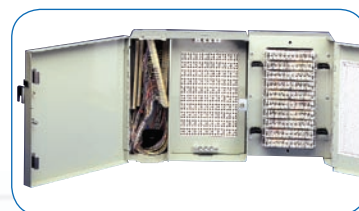
*Power-over-Ethernet Solutions*



*Digivance WFX*



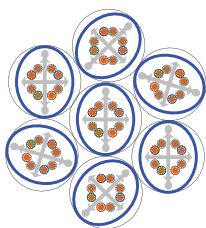
*Work Area Solutions*



*Building Entrance Terminals*

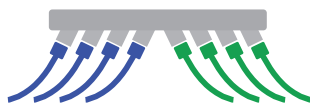
# Innovation Driven by a Quest for Performance

For more than 70 years, the company has invested heavily in research and development for one reason: To deliver the broadest line of network infrastructure products and solutions available from a single company. Thousands of patents line the walls of ADC KRONE labs and engineering facilities. The results of a few of these patents are highlighted here:



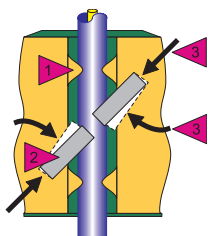
## CopperTen™

An integral part of ADC KRONE's TrueNet® Structured Cabling System, CopperTen™ is the world's first UTP structured cabling system to enable 10 Gigabit Ethernet over a full 100 metres. Installed in high-performance networks worldwide, the system's patent-pending design minimises alien crosstalk and insertion loss; it meets the performance requirements of IEEE 802.3an and TIA/EIA 568-B.2-10 draft standards.



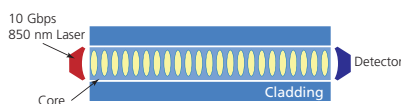
## Angle Left/Angle Right

ADC KRONE's L/R angle panels feature patented technology that allow you to angle the 6-port RJ45 modules left or right, depending on your cable management needs. This unique design minimises cable strain. In addition, the angled panels allow you to eliminate horizontal cable managers while improving patch flow throughout the rack.



## LSA-PLUS®

Silver-plated contact tags at 45-degree angles across the axis of the wire make a solid, gas-tight connection with ADC KRONE's patented LSA-PLUS connectors. Insulation clamping ribs hold the wire securely and isolate the contact area from vibration and mechanical stress. In addition, positioning contacts at a 45-degree angle leave more wire between contact points and provides a more reliable, stress resistant connection.



## Laser-Optimised Fibre

ADC KRONE employs laser-optimised fibre technology to eliminate the bit-error rate (BER) as a result of Differential Mode Delay (DMD) within the fibre. When DMD is reduced, several modes of light can travel at similar speeds, thus increasing the modal bandwidth.

## Partner Programs



Professional Architects, Consultants and Engineers (PACE) are served through this exclusive ADC KRONE partnership program. It's your direct source of information on emerging technologies, standards and industry trends. Professionals have access to custom bid templates, reference tools and technical information on ADC KRONE products and solutions.



TrueNet Rewards is a membership program allowing ADC KRONE customers to earn points for each product purchased. Points can be used to redeem free product or training. The program is designed to put margin back into the Integrator's company business and requires minimum administration by members. In addition to the reward points, members have access to the exclusive info line and website for technical support.

### Industry Associations

**IEEE** – Institute of Electrical and Electronics Engineers, Inc.

**TIA** – Telecommunications Industry Association

**ISO** – International Standards Organisation

### Education Associations and Organisations

**ACUTA** – The Association for Communications Technology Professionals in Higher Education

**WSTA** – Wall Street Technology Association

**BICSI** – Building Industry Consulting Service International

### Contact Us

To find out how you can put ADC KRONE enterprise infrastructure products and solutions into your facilities, contact ADC KRONE on 1800 801 298.



KRONE



**[www.adckrone.com/au](http://www.adckrone.com/au)**

AUSTRALIA 2 Hereford Street, Berkeley Vale NSW 2261  
Mailing Address: PO Box 335, Wyong NSW 2259, Australia  
Sales Support: 1800 801 298

**[www.adckrone.com/nz](http://www.adckrone.com/nz)**

NEW ZEALAND 2 Nevis Street, Petone, Wellington  
Mailing Address: PO Box 38-177, Wellington Mail Centre 6008, New Zealand  
Sales Support: 0800 657 663

ADC Telecommunications, Inc., P.O. Box 1101, Minneapolis, Minnesota USA 55440-1101  
Specifications published here are current as of the date of publication of this document. Because we are continuously improving our products, ADC reserves the right to change specifications without prior notice. At any time, you may verify product specifications by contacting our headquarters office in Minneapolis. ADC Telecommunications, Inc. views its patent portfolio as an important corporate asset and vigorously enforces its patents. Products or features contained herein may be covered by one or more U.S. or foreign patents. An Equal Opportunity Employer

**400069AU 03/07 © 2007 ADC Telecommunications, Inc. All Rights Reserved**