

ADC KRONE rises to the Challenge Challenger Financial Services Group builds new premises on ADC KRONE structured cabling network

CASE STUDY

The nature of Challenger's business means it cannot afford for communications to be slow or unavailable, and upgrading on a regular basis would be too disruptive. It was clear, then, that Challenger needed to find a communications infrastructure that would provide stability and high performance in the short term, as well as being able to meet any potential future requirements without having to upgrade.

Previously operating from three separate locations spread throughout the CBD, Challenger had decided to consolidate its operations into one central location in the Hilton office tower. The move was expected to increase efficiency and decrease costs.

Because the installation would be a "Greenfield" project, giving Challenger the opportunity to start from scratch, the business wanted to ensure it chose the right solution. Challenger worked with engineering consultants Bassett to investigate the available options and choose the best one for the business.





HighBand 25 300-pair kit

Ade Croucher from ADC KRONE recommended that Challenger's Manager, Infrastructure Projects, Carl Bragg, visit a similar project that had just been completed for Foxtel. Using an ADC KRONE structured cabling solution, Foxtel had successfully moved into its new premises and achieved the same communications infrastructure goals that Challenger had set for itself. Foxtel was the perfect showcase, making it simple for Carl Bragg and his team to choose ADC KRONE.

Why ADC KRONE?

Challenger required an error-free, fast communications network to be up and running before they began operating from the new premises. As well as meeting Challenger's immediate needs of speed and reliability, the solution would need to provide plenty of capacity to grow with the business, enabling Challenger to implement new services and technologies with a minimum of fuss.

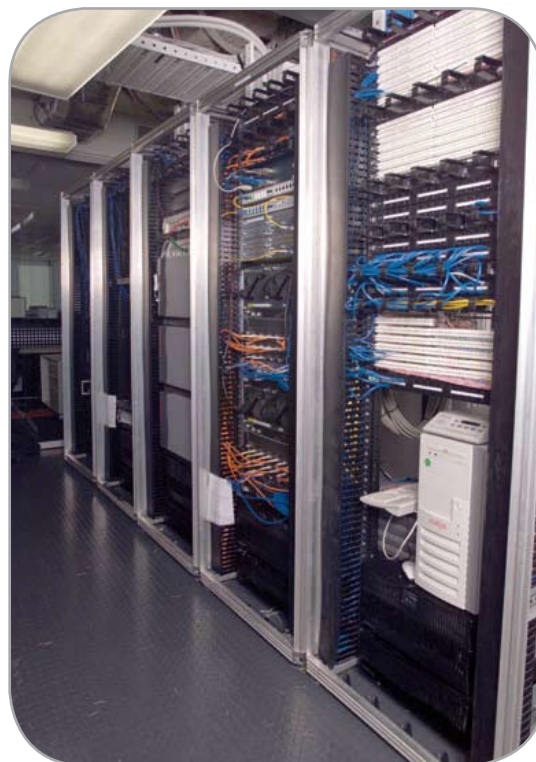
"Because Challenger was moving to a completely new environment, we could take advantage of the clean slate to future-proof

their network, building in very high levels of performance, reliability and stability," says Wayne Hill. "After seeing how Foxtel had achieved this with ADC KRONE, the team at Challenger knew they were in safe hands."

Challenger chose ADC KRONE's Rack Mount HighBand® 25 cross connect solution with Category 6 cabling plus an OM3 fibre backbone. HighBand® 25 allows for maximum throughput beyond one Gigabit and is the platform of choice for the most advanced networks. Its Patch-by-Exception functionality makes it easy and cost-effective to manage the network while the laser-optimised OM3 fibre backbone enables information to travel long distances without errors, thus maximising bandwidth.

Peace of mind and a smooth installation

Challenger enlisted the services of Premier TrueNet Integrator, Rencom Communications Group Pty. Ltd., to install the new infrastructure. Because Rencom is a very experienced ADC KRONE-certified installer, Challenger was given additional peace of mind with a 20-year warranty.



ADC KRONE structured cabling network



“Our goal was simple: we needed to get the network up and running in time for Challenger to take possession of the new premises,” says Rencom Managing Director Wayne Hill. “Of course, any project that depends on the completion of a new or newly refurbished building, like this one, will have its share of challenges and delays. In this case, the only real challenge for us was presented by the building’s physical limitations.”

Rencom overcame those limitations by using a ‘random lay’ configuration, allowing the cables to follow a path of least resistance. This flexible configuration elicits better network performance because it avoids any bunching, so it was ideal for Challenger’s needs.

In addition, Rencom used the HighBand 25 rack mount option because space in the communications rooms was limited.

“We had to contend with a number of variations during the construction process, so we were really pleased with how easy it was to install the HighBand 25 rack mount,” says Wayne Hill.

High standards have been met

After a smooth and hassle-free installation, Challenger’s new communications infrastructure was up and running.

“We got this project finished on time and on budget, despite encountering some unavoidable delays with building access and so on,” says Wayne Hill. “The new infrastructure performs exactly as Challenger expected it to after seeing the Foxtel installation, so everyone’s very happy.”

Expansion on the horizon

The Patch-by-Exception functionality means that Challenger will also be able to accommodate any expansion in the future.

CASE STUDY

CASE STUDY



KRONE



www.adckrone.com/au

AUSTRALIA 2 Hereford Street, Berkeley Vale NSW 2261
Mailing Address: PO Box 335, Wyong NSW 2259, Australia
Sales Support: 1800 801 298

www.adckrone.com/nz

NEW ZEALAND 2 Nevis Street, Petone, Wellington
Mailing Address: PO Box 38-177, Wellington Mail Centre 6008, New Zealand
Sales Support: 0800 657 663

ADC Telecommunications, Inc., P.O. Box 1101, Minneapolis, Minnesota USA 55440-1101
Specifications published here are current as of the date of publication of this document. Because we are continuously improving our products, ADC reserves the right to change specifications without prior notice. At any time, you may verify product specifications by contacting our headquarters office in Minneapolis. ADC Telecommunications, Inc. views its patent portfolio as an important corporate asset and vigorously enforces its patents. Products or features contained herein may be covered by one or more U.S. or foreign patents. An Equal Opportunity Employer

400244_AU 07/07 © 2007 ADC Telecommunications, Inc. All Rights Reserved